

# EmeriTimes Newsletter

June 2024, Number 32

**President: Ruby Englund**

**Editor: Dick Sleight**

**Members: Emeriti Faculty  
of Seattle Pacific University**

<b>President's Corner.....</b>	<b>1</b>
<b>2024 Emeriti Tea.....</b>	<b>2</b>
<b>Presidential Inauguration .....</b>	<b>3</b>
<b>Falcons Win at Royal Brougham .....</b>	<b>4</b>
<b>Noted Speakers at SPU.....</b>	<b>5</b>
<b>Emeriti Updates.....</b>	<b>6</b>
<b>In Memoriam.....</b>	<b>11</b>
<b>New 2024 Emeriti Faculty ..</b>	<b>12</b>
<b>Camp Casey Policy .....</b>	<b>14</b>

## **Purpose for the *EmeriTimes***

newsletter is "to edify, encourage, and connect emeriti faculty; to profile emeriti achievements (past and present); to provide news and information about members and SPU; to encourage emeriti to continue to be involved in world change." [The \*EmeriTimes\* newsletter archives](#) are maintained by the Office of the Chief Academic Officer.



## **President's Corner**

As I began the Presidency of the SPU Emeriti Faculty, Mike MacDonald, a previous President, handed me a folder of Emeriti materials he thought I should have. My first thought was that this folder should be in the Archives in the Library. I am an advocate for placing materials into an archival collection rather than being in a file at my house. I put the folder away at my house but recently decided to look over its contents again. It became a treasure of memories as I paged through the documents.

I started teaching at SPC in March of 1966. The materials in the folder dated back to 1989 when Lydia McNichols was Chair, Gus Breitenbach was Vice Chair and Clifford Roloff was Secretary-Treasurer. I am not certain when the Emeriti were organized nor if there are programs and minutes of meetings before that time. Perhaps Wes Lingren or Mike MacDonald could tell me. It felt like I was seeing a video from years past and remembering the many people who preceded us at SPU. It also made me realize one of the values of our Emeriti organization. It helps to keep us in touch with the faculty who came before us and to welcome a new group of retirees each year as we have recently done.

One of the treasures in the folder was an Emeriti Survey from 2005 when Joyce Quiring Erickson was President of the group. Thirty-eight emeriti responded indicating that certain items were very important to them. An Emeriti faculty directory, a yearly parking pass, and library privileges were the items that were rated as "Very Important." These benefits continue to be favorites.

A few years ago, an orientation session was established whereby new retirees have the opportunity to meet with a panel of emeriti who describe the benefits and opportunities that are available to emeriti. The panel members also describe ways in which they have transitioned into this next chapter of life, some continuing to teach and conduct research, and others who explore totally new paths.

(continued)



In addition, this organization keeps us connected to SPU where many of us spent much of our careers. We are grateful that the Office of the President and office of the Chief Academic Officer support our group by hosting two events each year. Emeriti are updated at these events regarding curriculum and enrollment. The distribution of the *EmeriTimes* newsletter is also facilitated which allows us to keep updated with activities of our former colleagues as well as campus events.

And so, I am grateful for the folder of previous emeriti materials that was given to me. In the future our archives will be kept electronically but it was delightful to page through the minutes, the invitations, a survey, and the directories, but now I will deliver the folder to the Archives in the SPU library.

*Ruby*



### **Emeriti Tea and a Season of Transition at SPU**

On the afternoon of March 28th, emeriti faculty and their guests enjoyed the annual Emeriti Tea. This year, the deans from the various schools joined their retired colleagues, providing a glimpse around the tables into what's been happening at the school and department level.

Emeriti President Ruby Englund blessed the gathering with her opening prayer in both English and Swedish. What followed was significantly more upscale than the "tea and biscuits" this reporter was expecting. While the Emeriti Tea is an afternoon event instead of a full luncheon, the three types of small sandwiches, two types of quiche, a variety of fresh fruit and scones, rich pastries, dipped strawberries, and cookies made for more than a full meal deal.

Interim Chief Academic Officer Les Steele was introduced as our speaker. He shared about a time of transition at SPU. His successor, Dr. Kathy Lustyk, had been announced just the day before. She was previously a Professor of Psychology at

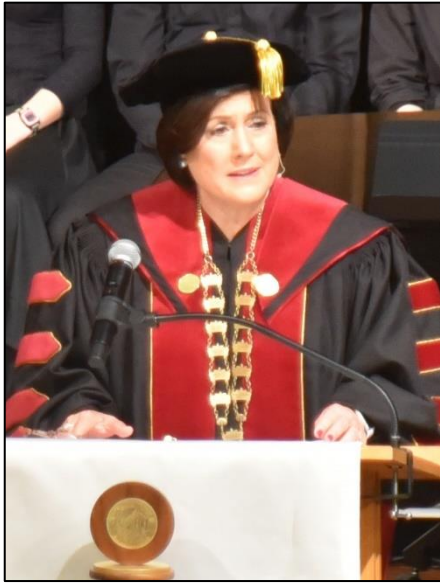
SPU and will return from her current position as Vice Chancellor and Professor of Psychology at Embry-Riddle Aeronautical University.

Dr. Steele listed a number of possible school/department reconfigurations on the academic side that were just entering the discussion phase. He described how Academics and Student Life each now report directly to President Porterfield. And, he also observed that at our next gathering he would return to his own SPU emeriti faculty status!

The afternoon concluded with Dr. Marilyn Severson on the piano accompanying the attendees in singing Charles Wesley's *O for a Thousand Tongues to Sing*.



Look unto him, ye nations, own / your God, ye fallen race! / Look, and be saved through faith alone, / be justified by grace!  
*O for a Thousand Tongues to Sing*, verse 13 of the original 18.



## An Elegant Presidential Inauguration

The inauguration of Deana L. Porterfield, Ed.D., the 12th president in Seattle Pacific University's 133-year history, was held on Friday the 23rd, at First Free Methodist Church.

Dr. Porterfield, who is SPU's first female president, assumed her new role on July 1, 2023. She previously served nine years as president of both Roberts Wesleyan University and Northeastern Seminary in Rochester, New York. Her 35-year career in Christian higher education included multiple positions in admissions including serving as vice president for enrollment management and senior vice president for people and organization development at Azusa Pacific University in California.

The SPU faculty gave Dr. Porterfield meaningful gifts of a book, microscope, and globe for her office. Douglas R. Cullum, Ph.D., Professor of Historical and Pastoral Theology at Northeastern Seminary introduced us all to our new president with whom he had worked closely for many years.

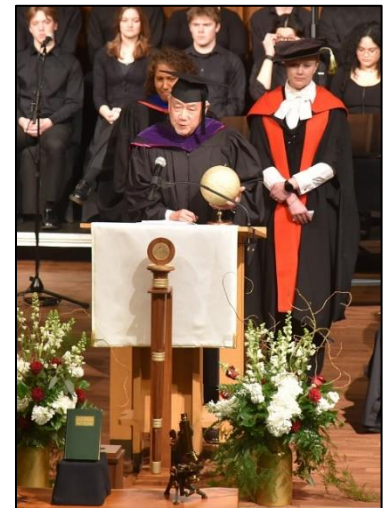
Past SPU presidents David McKenna, Curtis Martin, and Philp Eaton joined members of the SPU administration and Board of



Trustees and representatives from across academia in the platform party. The SPU faculty, including a number of our emeriti, provided a processional fit for the occasion.

The only place one sees four bars on a doctoral robe is on a sitting university president.

Our Lord was honored throughout the event with prayers, hymns, and choral arrangements. The SPU choir was excellent, and the entire program was elegantly conducted.



"The word **emeritus** . . . is Latin, originally meaning "veteran soldier." The honorary adjective is most often used with professor, but it applies to other professions whose retirees continue to hold their title, like ministers."

From Vocabulary.com



## Emeriti Day at Falcons Basketball

by [Dick Sleight](#), *EmeriTimes* editor



You can spend your "entertainment dollar" at the Mariners, Seahawks, Huskies, Kraken, Storm, Sounders, and a number of other local sporting venues, (I'm cheap and prefer the Everett AquaSox), but the same thrill of victory (or agony of defeat) can be achieved at no cost to emeriti faculty and their guests at Falcon Athletics home games. Your emeriti ID card is your ticket to all the excitement.

A game day each basketball season is chosen to which emeriti faculty are especially invited. I visited Royal Brougham Pavilion on Saturday, February 3rd to see the SPU Falcons play the Northwest Nazarene Nighthawks.

In the 2:00 PM early game, the SPU men avenged a January 4th 52-55 loss to NNU. The Falcons trailed 9-8 early but then went on an eight-minute 19-7 run and led the rest of the game. The Nighthawks kept the game close for all of the second half, usually trailing by five points or less. In the end, however, SPU survived with a 66-64 win.

In the women's game, it was quite a different story. The Lady Falcons never led in Saturday's game until Olivia Mayer hit a turnaround 12-footer with 51.9 seconds left for the last of her career-high 31 points and a 70-69 Falcons edge. NNU tied it up with free throws at 71-71 with 17.1 seconds left. With the final SPU possession, Freshman guard Layne Kearns caught a quick pass as she broke under the basket and put in a reverse layup leaving just 2.2 seconds on the clock. A desperation half-court shot fell short and the SPU women came away with the surprising 73-71 win. Again, like the men, they had avenged a 47-50 early season loss to NNU.



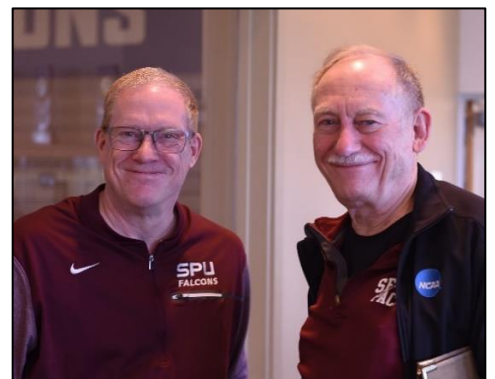
At halftime of the men's game, season ticket holders and the emeriti faculty met in the Falcon Lounge and heard from Men's Volunteer Assistant Coach George Parker. During halftime of the women's game, Athletic Director Dan Lepse spoke with us while we again enjoyed light refreshments. I got faked out because the men played two twenty-minute halves, while the women played four ten-minute quarters. I missed the start of the women's second quarter because I thought it was halftime and that I'd beaten everyone to the snacks! Emeriti Day at Royal Brougham Pavilion was an exciting experience. Count me in for next season!



Drs. Evette Hackman and Marilyn Severson flank Robert Hackman, MD, Evette's husband since 1967.



Assistant Coach George Parker



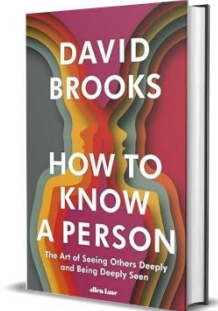
Dan Lepse and Dr. Bill Woodward



## David Brooks Returns to Campus

David Brooks "is a Canadian-born American conservative political and cultural commentator who writes for *The New York Times*. He has worked as a film critic for *The Washington Times*, a reporter and later op-ed editor for *The Wall Street Journal*, a senior editor at *The Weekly Standard* from its inception, a contributing editor at *Newsweek*, and *The Atlantic Monthly*, in addition to working as a commentator on NPR and the PBS *NewsHour*." (from Wikipedia)

His visit on April 11th was one of President Porterfield's Inauguration events and she introduced our speaker at his 3:00 PM lecture at First Free Methodist Church. It was also part of the book tour for his latest book, *How to Know a Person: The Art of Seeing Others Deeply and Being Deeply Seen*. Much of his presentation was drawn from this most



recent volume. His earlier visit was as the invited speaker at the business school's Downtown Business Breakfast in 2012.

For those accustomed to hearing Mr. Brooks on the PBS *NewsHour* program, it was refreshing to hear him in a Christian setting. David described his Jewish background in contrast with the movie *Fiddler on the Roof*. "I come from the other kind of Jewish family . . . my upbringing could be summed up by the phrase "Think Yiddish, act British." Brooks converted to Christianity over a period between 2013 and 2014.



"You can't cram for character."

*Dr. Randy Franz, Professor Emeritus of Management*



## Rev. Dr. Sam Wells, Vicar, St. Martin-in-the-Fields

One of the treats of remaining involved at SPU as an emeriti faculty member is being invited to special events. Rev. Dr. Sam Wells, Vicar of St. Martin-in-the-Fields (London) was the invited speaker at this year's Alfred S. Palmer Lecture, an evening presentation at First Free Methodist Church on May 21st. Earlier that day, he spoke at SPU's Chapel program. The next day, several current and emeriti faculty gathered at the FPMC Fine Center for a lunchtime question and answer session with this Church of England theologian, prolific author,

and former Dean of the Duke University Chapel in North Carolina. It was a privilege to get to hear from and speak with such a living pillar of Christ's Church.



## Emeriti Faculty Updates



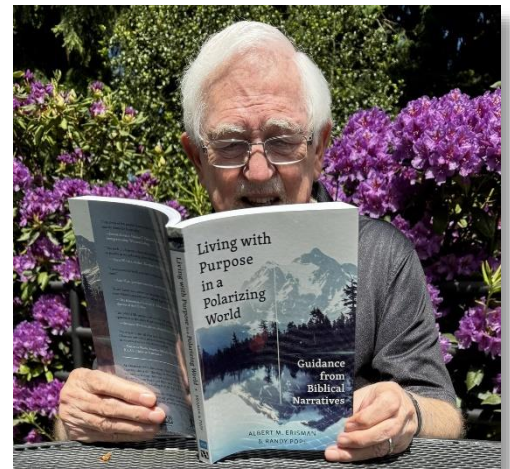
**Al Erisman**, *Executive in Residence Emeritus*

Al spent 17 years at SPU in SBGE as executive in residence after a career at Boeing, and continues to teach occasional courses there. He recently completed a new book, *Living with Purpose in a Polarizing World: Guidance from Biblical Narratives*, with co-author Randy Pope that was just released this month. Here is a brief description of the book.

Western culture is increasingly polarized, and Christians often feel they are “under siege” by the dominant secular culture. Compounding the problem is that Christians cannot agree among themselves how to respond to living in an increasingly “post-Christian” society. The authors have observed five basic responses by Christians to this feeling of “exile”: (1) assimilation and acceptance of the new cultural norms, (2) withdrawal from cultural engagement, (3) anger directed toward society (and toward other Christians who don’t see the issues as they do), (4) fear, or (5) seeking power to “take back the culture.”

Scripture calls us to a different way, speaking into the world with a new voice. Micah calls us to “seek justice, love mercy, and walk humbly” with God, Jeremiah calls us to “seek the good of the city,” and Jesus calls us to be salt and light while knowing that in this world we “will have trouble.” In short, we are to engage the culture we live in as disciples of Jesus. But how practically is that done?

In this book, the authors look carefully at the lives of twelve biblical characters who also lived in “challenging times” for guidance in navigating our post-Christian world. Rejecting assimilation, withdrawal, anger, fear, and power-seeking, we are challenged today to live with humility, influence, and grace. The ancient words of Mordecai to Esther should speak to each of us: “Who knows whether for just a time as this you have come to this position in your life?”



**Danni Gheleva**, *Associate Professor Emerita of Food & Nutrition*

Dr. Gheleva taught a variety of classes while part of the faculty in the Family & Consumer Sciences department since 2005. Many of these classes were considered the most challenging in the nutrition and dietetics program: “Advanced Nutrition & Metabolism”, “Medical Nutrition Therapy”, and “Nutrition Research”, which she developed herself and added to the program’s curriculum. Teaching “Sports Nutrition” to students from the Health & Human Performance/Exercise Science program each year was a lot of fun, not the least because of the dynamic created by these classes being composed of many more male (action-focused) students than her major nutrition classes. Danni also fully redesigned the 2000-level “Food & the Consumer” course to earn the “Ways of Engaging” designation and open it to any student, regardless of major. This course engaged students with issues faced by all food consumers: food production, food labels, dietary supplements, popular diets, food insecurity, and food policy, among others. In her first year at SPU, Danni’s office was on the Humanities floor in Marston Hall, allowing her to develop friendships with many of her colleagues there, and leading to many hikes with Dr. Luke Reinsma.

**New 2024  
Emeriti**

(continued)

In addition to juggling teaching 6-7 courses per year, Danni started the SPU Community Kitchen in 2011 – the first Teaching Kitchen on a college campus in Washington State. The program ran for over 10 years, engaging and providing valuable skills to both SPU students and the off-campus community. Danni also created the Florence Study Abroad Seminar, facilitating academic and hands-on learning, along with adventures in exploring Mediterranean food culture and sustainable food production in Italy for groups of SPU students. And she spent over a year creating a study abroad program in Nairobi, Kenya, focused on hands-on clinical experiences in Nutrition for HIV/AIDS in collaboration with a local faith-based clinic she visited there, which unfortunately was canceled due to concerns about student safety. Dr. Gheleva devoted many hours to mentoring students in their decisions about next steps and supporting them through numerous letters of reference during the dietetic internship application process many graduating nutrition students tackle each year. Over the years she has advised several student clubs including the SPU Yogi, the SPU Women's FC (Soccer Club), and the SPU Invisible Children Club. Most recently, she directed the effort to launch a master's program in Nutrition, developing the curriculum, and recruiting interdisciplinary faculty.

As a solo parent (by choice) of two young children, Danni does not have the option to retire quite yet. She plans to grow her private practice Kaleidoscope Nutrition, helping adults discover their best health through nutrition education, therapy, and coaching. And she hopes to continue taking others to Italy to explore the simplicity and healthfulness of the Mediterranean eating pattern and lifestyle.



**Emily Hitchens, Professor Emerita of Nursing**

Lowell and I are both quite active in our church and I in the community. We enjoy going to the Rainier Symphony and Taproot Theatre.

Currently I am president of AAUW-WA; we have 25 branches and 1500 members. Right now, we are working on our STEM camp for 7th grade girls which is held at PLU for a week in July. I attended the Robotics Club at a Kent middle school to meet potential campers and was amazed at the robot they built out of Legos that they programmed to solve a Rubik's cube!

We were given a little West Highland Terrier last summer. He is energetic and likes to play and go for walks.

We still like to travel and think that the railroad is maybe the way to go after a trip on the Alaska Railroad last year from Anchorage to Denali and on to Fairbanks. This spring we are planning to go up to Vancouver, BC, via Amtrak and visit friends.

My daughter Amy, an SPU grad, is pastor at the Normandy Park UCC and that keeps her very busy. I attend a Bible Study on Exodus with her and her husband via Zoom. He has an MA in Theology.

We wish everyone well and have a good summer.

It is the highest impertinence and presumption... in kings and ministers, to pretend to watch over the economy of private people, and to restrain their expense... They are themselves always, and without any exception, the greatest spendthrifts in the society. Let them look well after their own expense, and they may safely trust private people with theirs. If their own extravagance does not ruin the state, that of their subjects never will.

Adam Smith, *The Wealth of Nations*,  
Book II, Chapter III

Though your son, under five-and-twenty years of age, should be but a coxcomb; do not, upon that account, despair of his becoming, before he is forty, a very wise and worthy man, and a real proficient in all those talents and virtues to which, at present, he may only be an ostentatious and empty pretender. The great secret of education is to direct vanity to proper objects.

Adam Smith, *The Theory of Moral Sentiments*,  
Part VI, Section III



**Amy Mezulis, Professor Emerita of Clinical Psychology**



I've had the advantage of a tapered exit from SPU to transition into a new stage of professional life. I resigned my regular faculty position in June 2023, but I remain in an affiliate capacity to mentor my remaining PhD students through the completion of their programs.

My 18 years at SPU have formed the bulk of my identity as a scholar and teacher. Across those years I received and completed three NIH grants, published over 50 articles, and graduated over 30 PhD psychologists. I had the opportunity to serve as chair of my department for five years and to represent my department and school on Faculty Council for six years. It is always true, however, that the very best parts of any life experience are the people. I have loved my colleagues at SPU, but most of all I've loved being part of students' lives. It is a very special privilege to walk alongside someone as they develop their professional identity, at first guiding as a mentor and later walking next to each other as colleagues.

I'm excited to spend more time in other professional endeavors. I currently serve as co-founder and chief clinical officer for Joon Care, a teletherapy platform for teens and young adults. At Joon I get to see how so many years of primary research on teen mental health can be applied in real life by applying technology to the current youth mental health crisis. I've also recently finished a teen depression workbook, which will be available on New Harbinger Press in September.

At heart I'm a developmentalist, so I'm always excited to hear how people pursue the human needs for purpose, meaning, and connection at different stages of life. I can't wait to hear what my SPU colleagues are up to next.



**Katya Nemtchinova, Professor Emerita of Linguistics**



During 26 years at SPU, Katya Nemtchinova has been a core LCL faculty member whose teaching portfolio has included Russian, linguistics, MA TESOL, and cultural studies on the European Quarter study-abroad program. A teacher beloved for her dynamism, her innovative use of technology in the classroom, her integration of faith and learning, and her ability to spark enthusiasm, Katya was voted SPU "Professor of the Year" in 2018. Her many former students are now serving as practitioners and leaders in the field of teaching English to speakers of other languages, as well as in U.S. government service.

Katya holds a doctorate in applied linguistics from the State University of New York at Stony Brook and is a prolific scholar with an edited volume, three books, and numerous publications in both TESOL and Slavic language journals. An active member of numerous professional organizations, including the Christian Association of World Languages, TESOL, and the American Association of Teachers of Slavic and East European Languages, Katya is a frequent presenter, guest speaker, conference organizer, and webmaster. At SPU, Katya has served on the Intercollegiate Athletics Committee, on GPEC, as a co-chair of the LCL Department, and as a faculty advisor for the SPU Fulbright Committee. Beyond SPU, Katya is active in her church and in the Russian-speaking community of the Seattle area. Katya is also an expert knitter and a talented athlete. When she is not creating a wearable piece of art, she can be found skiing the slopes of Washington State or even rollerblading the streets of Paris!

Being twenty in the seventies was much more fun than being seventy in the twenties.





**Elaine Weltz, Assistant Professor Emerita of Computer Science**

The big news from Weltz-land is that Tim and I have moved to Mount Vernon. It seems a bit odd: I left Mount Vernon for SPC 54 years ago and am now headed back, just in time for my 50-year class reunion. Not to mention we bought the property from my 7th grade math teacher. Both the city and I have changed a lot, but there actually are a few people up there who remember my family. Our new home has two guest rooms, so if any of you are headed north (to view tulips or whatever) just email [eweltz@spu.edu](mailto:eweltz@spu.edu) or [eweltz@comcast.net](mailto:eweltz@comcast.net) and we'll set up a visit or an afternoon beverage. 😊

We're keeping our positions at [Rose Hill Church](#) in Kirkland and I'll continue with the [Everett Philharmonic](#). A choir director in Mount Vernon told me she thinks word will get out and I'll soon be getting calls to play. We'll see. In the meantime, I'm looking forward to spending time in my new music room communing with my piano and walking the nearby [Kulshan Trail](#).

Speaking of music, fellow Seattle Pacific music alums Barbara Schrader Oakley '72 and Patrice Weed Shearer '76 and I were soloists for a [Port Gardner Bay Music Society](#) Concert in early February. The program included Bach's 5th Brandenburg Concerto and a Concerto Grosso by Ernest Bloch, so I got to use both harpsichord and piano. It was good to be challenged by difficult but wonderful compositions but even better to still be performing with good friends I've known (nearly) forever!



Pictured left to right: Barbara Oakley, Patrice Shearer, Elaine Weltz

**Everybody Needs a Hobby**

Let us know what your most interesting (or quirky) hobby is. We'd love to feature it in a future edition of the *EmeriTimes* newsletter. Here below are two such passions. Also, please consider sending a brief update about your recent activities, travels, and/or service in an **Emeriti Faculty Update** of your own to [SL8@spu.edu](mailto:SL8@spu.edu).

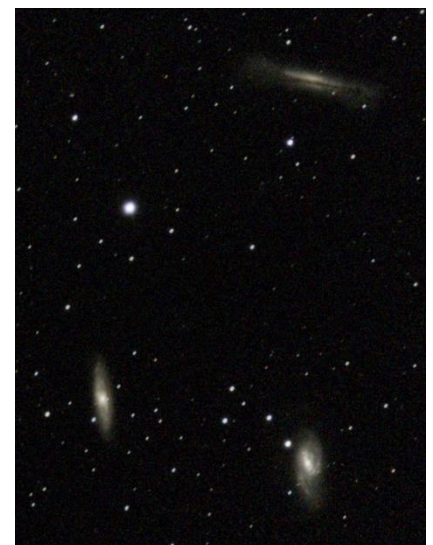


**Doug Downing, Associate Professor Emeritus of Economics**

Doug is well known to the SPU emeriti community as an astronomer. His telescope was in regular use during Faculty Retreats at Camp Casey. At the start of his junior year at Yale he finally settled on his two "combination" majors, economics/political science and astronomy/physics. While his academic home at SPU was in the business school, he also taught PHY 1135: *Astronomy: Individual and the Universe*. He began

teaching astronomy in 1999 upon the retirement of [Dr. Karl Krienke](#). His brief **Emeriti Faculty Update** reported:

- 1) surgery for a macular hole in February
- 2) teaching one class in winter and two in spring
- 3) photographing galaxies



Click the image to view it enlarged.



**Dick Sleight, Your EmeriTimes Editor**

I studied Northwest Native Art under the late Professor Marvin Oliver (native of Quinault and Isleta-Pueblo heritage) at the University of Washington.



It's long past time I designed a falcon. The theory is that retirement will allow me time to return to this passion. However, an 8th grandchild due in October may have something to say about that.

**An Invitation to Contribute to the SPU Archives**

The SPU Archives invites emeriti faculty to donate their faculty papers to the library. We welcome papers from faculty that document their time at Seattle Pacific University and their contributions to teaching, scholarship, and service. These papers may include such things as teaching and research materials, professional and university activities, photographs, professional correspondence, drafts and manuscripts, and awards and honors. Please contact Technical Services Specialist Amanda Keithley ([keithleya@spu.edu](mailto:keithleya@spu.edu)) if you are interested in donating.



The Seattle Pacific College faculty of 1922.

**Our Organization's Beginnings**

The history of our emeriti faculty organization can be seen in these earliest editions of the *Emeri-Times* newsletter edited by Wes Lingren, Professor Emeritus of Chemistry.



No. 1  
December 2007

No.2  
June 2008

No.3  
December 2008

No. 4  
June 2009

No. 5  
December 2009

No. 6  
June 2010

No. 7  
December 2010



## In Memoriam: Professor Emeritus Ed Smyth

Professor Emeritus of Educational Ministry Ed Smyth died at his home in Lexington, Kentucky, on March 9, 2024, after a lengthy illness. Ed came to SPU in 1976 and taught educational ministry (Christian education) until 1985, and then again from 2000 to 2016, when he retired. He was the director of Church Relations at SPU from 1985 to 1992 and served in ministry positions outside of SPU from 1992 to 2000.

During his 32 years of faithful service at SPU, Ed led 29 yearlong student discipleship groups at his home every Thursday evening. Ed was the 2003 Professor of the Year and was twice asked to be the baccalaureate speaker at Commencement. "All of us who had the privilege of knowing Ed recognized him as a cheerful, kind person who, above all, wanted everyone to experience the love of Jesus," says Doug Strong, Paul T. Walls Professor of Wesleyan Studies and the History of Christianity.

Ed is survived by his wife, Ellen, his four children, David, Melanie, Josh, and BJ, and several grandchildren. Condolences can be sent to Ellen Smyth, 2428 Brookshire Circle, Lexington, KY., 40515.

(From the March 18th SPU *Faculty/Staff Bulletin*)

Another cherished emeritus colleague has passed ahead into Glory. Dr. Ed Smyth and his wife Ellen moved to Lexington, Kentucky shortly after his retirement. Our prayers are with Ellen and all the family.

A local memorial service was held on May 11th at First Free Methodist Church.



## DeLoss Fry, (1934-2024)

DeLoss Fry, husband of Mary Fry, Associate Professor Emerita of Nursing, passed away on March 25th. Mary taught in the School of Health Sciences for 40 years, retiring in 2009.

A Purdue graduate in 1958, DeLoss worked at the Hanford Site in eastern Washington, later moving to Seattle in 1962 where he joined the artificial kidney research team at the University of Washington as a biomedical research engineer. He finished his career as a licensed Nuclear Reactor operator on the UW campus until his retirement when the reactor closed in 1990.

He served in the Army Reserve from 1958-1994 retiring as a Lieutenant Colonel, having served as a citizen soldier in the cold war years. He was an avid Husky fan, attending every home game for 49 years.

Contributions in his memory may be given to [North East Seattle Together](#) (NEST).

(As shared from his [Seattle Times](#) obituary.)



## 2024 New Emeriti Faculty Orientation

by Mike Macdonald, *Historian/Futurist for the Emeriti Faculty*

SPU has one of the more active emeriti organizations, meeting at least twice each year, in the fall hosted by the University President and in the spring hosted by the Chief Academic Officer. We have an approved Vision, a Mission, a Newsletter, a Coordinator of Praises, Prayers, Cares and Concerns, and a Historian/Futurist. We have [a website](#), and the administrative tasks are performed out of the Office of the Chief Academic Officer. Benefits to our members include a campus parking pass, Camp Casey access, sporting events, and library privileges including use of the graduate/faculty reading room, and more.

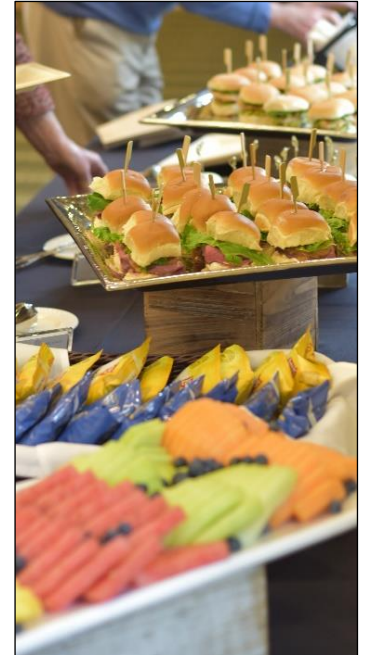
Our 2024 *Orientation for New SPU Emeriti Faculty* was held on April 15<sup>th</sup>.

For the last three years, the current SPU emeriti faculty, (now about 161 members, including 15 new members this year), has been working with the Office of the Chief Academic Officer to orient each year's new emeriti faculty to retirement. Retiring is not an easy move for numerous reasons, and we concluded that an orientation session would be beneficial for making decisions that would likely enhance retirement. The session was held from noon to 1:15 PM on campus. Many of this year's new emeriti faculty, listed on the next page, attended the event. Faculty presenters included Chief Academic Officer Les Steele, SPU emeriti organization President Ruby Englund, and six other retired SPU faculty, including Kathleen Braden (Geography), Richard Steele (Religion), Bob Drovdahl (Religion), Cynthia Strong (Librarian), and Mike Macdonald (European Studies). Their themes included: a description of the SPU emeriti organization and its benefits; staying active in retirement by teaching, publishing, and research; having a rewarding retirement in

primarily non-academic ways; what to keep and what to discard from faculty offices; opportunities for library use after retirement; and reflections on both flunking and fulfilling retirement.



A delicious lunch provided by the Office of the Chief Academic Officer preceded the seven brief presentations, and a question and discussion time concluded the session.



“One of the earliest records of retirement can be traced back to Roman Emperor Augustus. He instituted a pension program for a select group of Roman Legionnaires who had served 20 years in the military in 13 B.C. Financed by taxes, this early pension was an effort to ensure that retired soldiers would not rise up against the Roman empire.”

From *The History of Retirement*, The Fiduciary Group.



## 2024 Incoming Emeriti Faculty Dinner: *Celebration of Service*

The annual faculty retirement dinner followed a familiar format with an elegant buffet followed by a number of accolades to retiring and departing faculty given by their colleagues. Due to the unique nature of organizational changes at the University over recent months, the honorees were recognized not as retirees but as new emeriti faculty. President Porterfield followed these ever-impressive faculty tributes by bestowing emeriti distinctions on the newest class of emeriti and, with the assistance of Dr. Les Steele, by awarding those present with their crystal falcons. Individual resolutions from the President and Board of Trustees recognizing the outstanding service of our fifteen new emeriti faculty members were reserved for school and department-level gatherings. Current and emeriti faculty and their guests recognized our amazing new emeriti colleagues with a long and joyful standing ovation. We welcome these fifteen exceptional colleagues into the ranks of our emeriti organization.



Here is **the evening's program**, complete with photos and summary highlights for each of the honored faculty members, prepared in a mobile-ready format.

Elena M. V. Brezynski, Ph.D.	Associate Professor of Biology	12 Years of Service
Christine Chaney, Ph.D.	Professor of English	30 Years of Service
David Diekema, Ph.D.	Associate Professor of Sociology	32 Years of Service
Cher Edwards, Ph.D.	Professor of Counselor Education	23 Years of Service
Randal (Randy) Franz, Ph.D.	Professor of Management	33 Years of Service
Greg Fritzberg, Ph.D.	Professor of Education	23 Years of Service
Daniela Gheleva, Ph.D.	Associate Professor of Food and Nutrition	18 Years of Service
Richard Lorig, MFA	Professor of Theatre	10 Years of Service
Patrick McDonald, Ph.D.	Professor of Philosophy	22 Years of Service
Amy Mezulis, Ph.D.	Professor of Clinical Psychology	17 Years of Service
Katya Nemtchinova, Ph.D.	Professor of Linguistics	26 Years of Service
Cynthia (Cindy) Price, Ph.D.	Associate Professor of Sociology	31 Years of Service
Daniel Schofield, Ph.D.	Professor of Chemistry	13 Years of Service
Lane Seeley, Ph.D.	Professor of Physics	22 Years of Service
Karen Snedker, Ph.D.	Professor of Sociology	18 Years of Service



# CAMP CASEY

OWNED BY SEATTLE PACIFIC UNIVERSITY | WHIDBEY ISLAND

Near the bottom of the [Emeriti Faculty web page](#), you'll find this statement under, "Additional privileges not listed in the handbook." **Mid-week Faculty/Staff House reservation privileges at Camp Casey (holidays and summer months excluded.)**

Here are the recently updated details related to this special benefit.

## Emeriti Faculty Reservation Policy for Camp Casey Faculty House

**Purpose:** [This policy](#) aims to provide emeriti faculty of Seattle Pacific University with reservation privileges for the Faculty House at Camp Casey on Whidbey Island, excluding holidays and summer months.

**Policy Statement:** Emeriti faculty members of Seattle Pacific University are eligible to make reservations for the Faculty House at Camp Casey for mid-week stays, subject to availability. Mid-week stays are defined as stays from Monday evening through Thursday evening. This privilege excludes holidays and the summer months, which are defined as the period from Memorial Day weekend through Labor Day weekend.



### Reservation Process:

**Eligibility:** Only emeriti faculty members of Seattle Pacific University are eligible for this reservation privilege. Only personal, vacation use of the Faculty House is allowed under this courtesy benefit. The emeriti faculty member or his/her spouse must be present with the party using the house at Camp Casey. Other uses, such as SPU departmental use, church groups, Bible Study groups, school groups, youth groups or



any other type of retreat that is sponsored by or referred by a faculty or staff member must be booked through the Camp Casey Office according to normal reservation procedures.

**Reservation Requests:** Requests should be made by contacting the Camp Casey Conference Center directly; [CampCasey@spu.edu](mailto:CampCasey@spu.edu); (360) 678-5050.

**Availability:** Reservations are subject to availability and are granted on a first-come, first-served basis. Reservations may only be made for the current faculty/staff awarding period. A contract will be issued by the Camp Casey staff.

**Booking Fee:** The non-refundable reservation deposit is called the "booking fee." The current rate is \$25/night. The booking fee is required to confirm the reservation and is due within two weeks of receiving the contract.

**Confirmation:** Once a reservation request is received, confirmation will be provided based on availability and compliance with this policy.

**Exclusions:** Reservations under this policy are not available during holidays (including but not limited to Thanksgiving, Christmas, New Year's, and other nationally recognized holidays) and the summer months (Memorial Day weekend through Labor Day weekend).

**Cancellation:** If you find that you must cancel your stay after it has been confirmed, you will forfeit the booking fee. The booking fee may not be transferred from one reservation to the next.